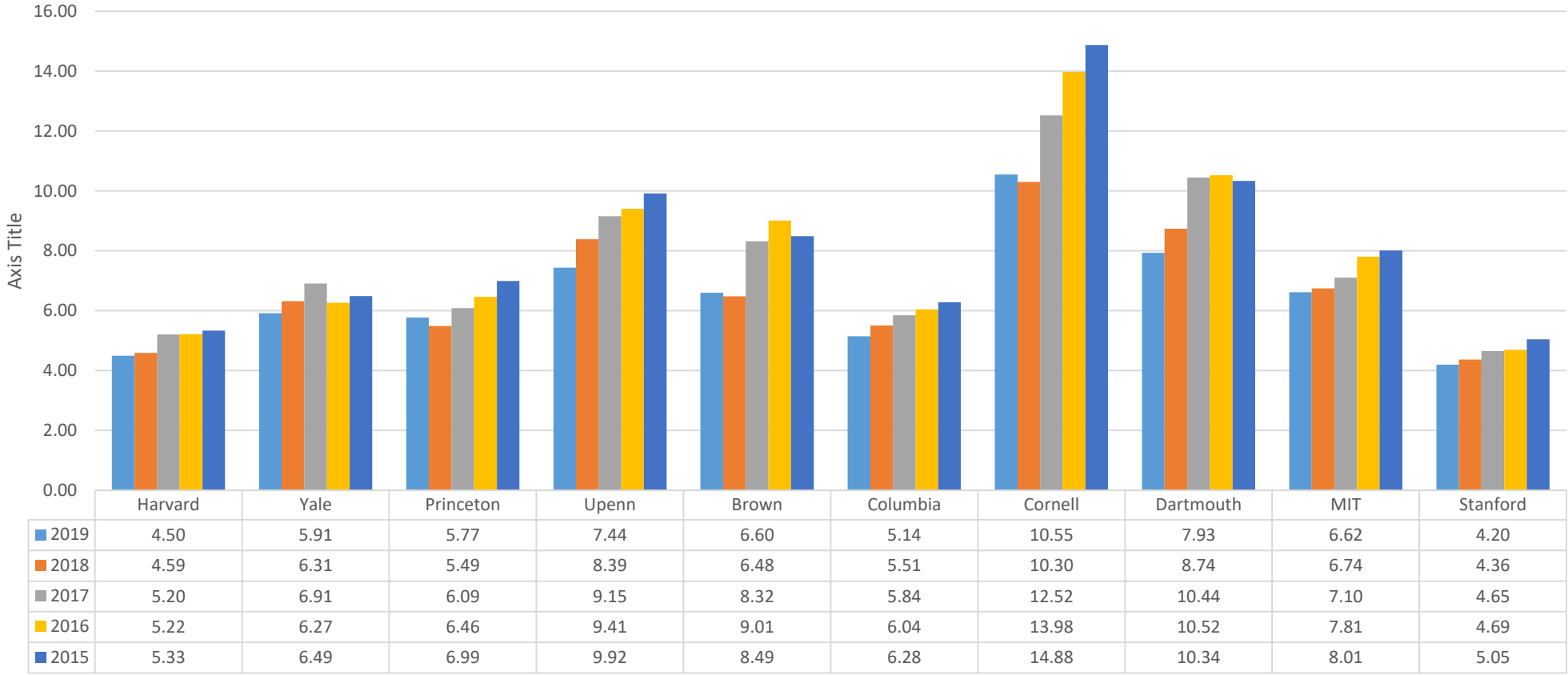
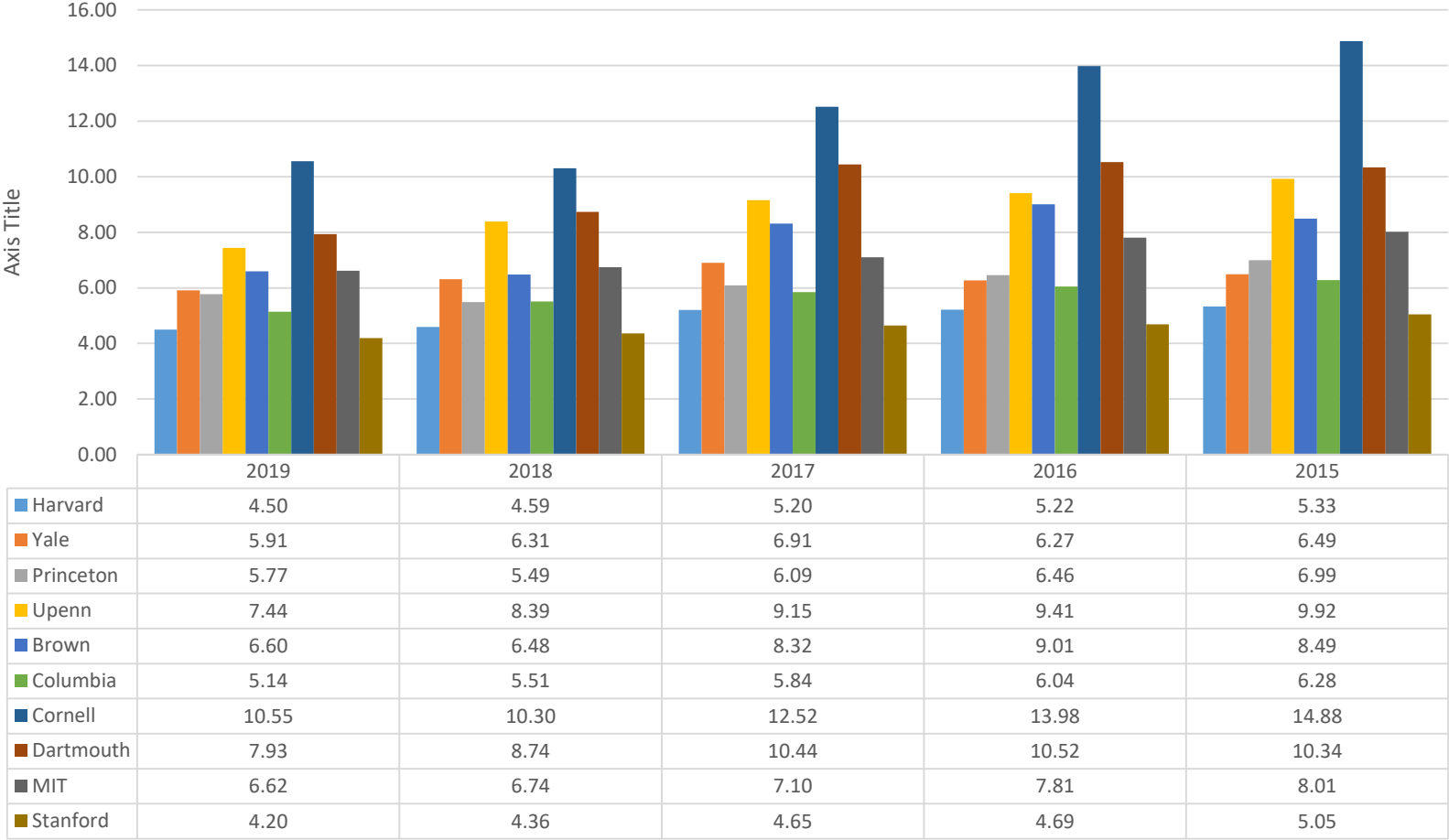


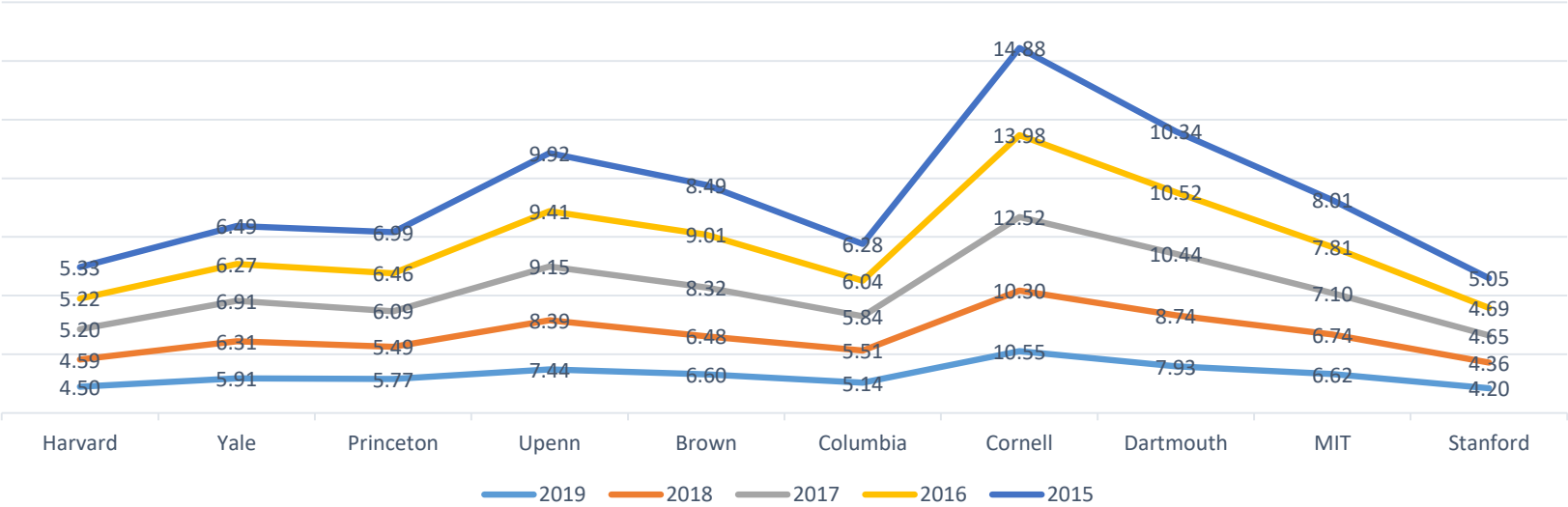
Acceptance Rate by Colleges



Acceptance Rate by Year



Acceptance Rate by Colleges



Harvard	Overall			Early			Regular		
Year	Applied	Admit	rate	Applied	Admit	rate	Applied	Admit	rate
2019	43,330	1,950	4.50	6,958	935	13.44	36,372	1,015	2.79
2018	42,749	1,962	4.59	6,630	964	14.54	36,119	998	2.76
2017	39,506	2,056	5.20	6,473	938	14.49	33,033	1,118	3.38
2016	39,041	2,037	5.22	6,173	918	14.87	32,868	1,119	3.40
2015	37,305	1,990	5.33	5,919	977	16.51	31,386	1,013	3.23
Yale	Overall			Early			Regular		
Year	Applied	Admit	rate	Applied	Admit	rate	Applied	Admit	rate
2019	36,843	2,178	5.91	6,020	794	13.19	30,823	1,384	4.49
2018	35,306	2,229	6.31	5,733	842	14.69	29,573	1,387	4.69
2017	32,900	2,272	6.91	5,086	871	17.13	27,814	1,401	5.04
2016	31,457	1,972	6.27	4,664	795	17.05	26,793	1,177	4.39
2015	30,237	1,963	6.49	4,693	753	16.05	25,544	1,210	4.74
Princeton	Overall			Early			Regular		
Year	Applied	Admit	rate	Applied	Admit	rate	Applied	Admit	rate
2019	36,843	2,127	5.77	6,020	743	12.34	30,823	1,384	4.49
2018	35,370	1,941	5.49	5,402	799	14.79	29,968	1,142	3.81
2017	31,056	1,890	6.09	5,003	770	15.39	26,053	1,120	4.30
2016	29,303	1,894	6.46	4,229	785	18.56	25,074	1,109	4.42
2015	27,290	1,908	6.99	3,850	767	19.92	23,440	1,141	4.87
Upenn	Overall			Early			Regular		
Year	Applied	Admit	rate	Applied	Admit	rate	Applied	Admit	rate
2019	44,960	3,345	7.44	7,110	1,279	17.99	37,850	2,066	5.46
2018	44,482	3,731	8.39	7,074	1,312	18.55	37,408	2,419	6.47
2017	40,413	3,699	9.15	6,147	1,354	22.03	34,266	2,345	6.84
2016	38,918	3,661	9.41	5,762	1,332	23.12	33,156	2,329	7.02
2015	37,267	3,697	9.92	5,489	1,316	23.98	31,778	2,381	7.49

Brown		Overall			Early			Regular		
Year	Applied	Admit	rate	Applied	Admit	rate	Applied	Admit	rate	
2019	38,674	2,551	6.60	4,230	769	18.18	34,444	1,782	5.17	
2018	39,620	2,566	6.48	3,502	737	21.05	36,118	1,829	5.06	
2017	32,724	2,722	8.32	3,170	695	21.92	29,554	2,027	6.86	
2016	32,390	2,919	9.01	3,030	669	22.08	29,360	2,250	7.66	
2015	30,397	2,580	8.49	3,016	617	20.46	27,381	1,963	7.17	
Columbia		Overall			Early			Regular		
Year	Applied	Admit	rate	Applied	Admit	rate	Applied	Admit	rate	
2019	42,569	2,190	5.14	4,461	650	14.57	38,108	1,540	4.04	
2018	40,203	2,214	5.51	4,085	650	15.91	36,118	1,564	4.33	
2017	37,389	2,185	5.84	4,086	650	15.91	33,303	1,535	4.61	
2016	36,292	2,193	6.04	3,520	620	17.61	32,772	1,573	4.80	
2015	35,480	2,228	6.28	3,373	600	17.79	32,107	1,628	5.07	
Cornell		Overall			Early			Regular		
Year	Applied	Admit	rate	Applied	Admit	rate	Applied	Admit	rate	
2019	49,118	5,183	10.55	6,159	1,395	22.65	42,959	3,788	8.82	
2018	51,328	5,288	10.30	6,319	1,533	24.26	45,009	3,755	8.34	
2017	47,038	5,889	12.52	5,384	1,378	25.59	41,654	4,511	10.83	
2016	44,906	6,277	13.98	4,822	1,338	27.75	40,084	4,939	12.32	
2015	41,907	6,234	14.88	4,800	1,200	25.00	37,107	5,034	13.57	
Dartmouth		Overall			Early			Regular		
Year	Applied	Admit	rate	Applied	Admit	rate	Applied	Admit	rate	
2019	23,647	1,876	7.93	2,471	574	23.23	21,176	1,302	6.15	
2018	22,033	1,925	8.74	2,270	565	24.89	19,763	1,360	6.42	
2017	20,034	2,092	10.44	1,999	555	27.76	18,035	1,537	7.78	
2016	20,675	2,176	10.52	1,927	494	25.64	18,748	1,682	9.33	
2015	20,505	2,120	10.34	1,859	483	25.98	18,646	1,637	8.73	

MIT	Overall			Early			Regular		
Year	Applied	Admit	rate	Applied	Admit	rate	Applied	Admit	rate
2019	21,312	1,410	6.62	9,600	707	7.36	11,712	703	6.00
2018	21,706	1,464	6.74	9,557	664	6.95	12,149	800	6.58
2017	20,247	1,438	7.10	8,394	657	7.83	11,853	781	6.59
2016	19,020	1,485	7.81	7,767	656	8.45	11,253	829	7.37
2015	18,306	1,467	8.01	6,519	625	9.59	11,787	842	7.14
Stanford	Overall			Early			Regular		
Year	Applied	Admit	rate	Applied	Admit	rate	Applied	Admit	rate
2019	49,000	2,057	4.20	8,500	700	8.24	40,500	1,357	3.35
2018	47,450	2,071	4.36	8,400	750	8.93	39,050	1,321	3.38
2017	44,073	2,050	4.65	7,822	721	9.22	36,251	1,329	3.67
2016	43,997	2,063	4.69	7,822	745	9.52	36,175	1,318	3.64
2015	42,487	2,144	5.05	6,948	748	10.77	35,539	1,396	3.93
IVY League	Overall			Early			Regular		
Year	Applied	Admit	rate	Applied	Admit	rate	Applied	Admit	rate
2019	315,984	21,400	6.77	43,429	7,139	16.44	272,555	14,261	5.23
2018	311,091	21,856	7.03	41,015	7,402	18.05	270,076	14,454	5.35
2017	281,060	22,805	8.11	37,348	7,211	19.31	243,712	15,594	6.40
2016	272,982	23,129	8.47	34,127	6,951	20.37	238,855	16,178	6.77
2015	260,388	22,720	8.73	32,999	6,713	20.34	227,389	16,007	7.04